

Ultrasonic Sludge Density Meter

ENV200 SERIES

DATA SHEET

WESS GLOBAL, INC.

Head office/Factory/R&D Center

B-8F, Ace high tech city, 10 Baekseokgongdan 1 ro, Seobuk gu, Cheonan, 31094, Korea

Tel 041-584-8820

Fax 041-584-8840

E-mail mt@wessglobal.com

www.wessglobal.com



Ultrasonic Sludge Density Meter

ENV200 Series

CE



The ENV200 is an ultrasonic instrument measuring density of suspended solid in liquid. The ENV200 utilizes the EEA (Envelope Energy Average) measuring algorithm that profiles reception signal and then calculates its energy, rather than using the reception signal's amplitude change. ENV200 comprises of a controller and two types of sensors, such as spool-piece and clamp-on type to accommodate all field demands at various installations.

Features

- Continuous and real-time measurement
- Reliable signal control EEAM(Envelope Energy Average Method) algorithm
- Two type of sensors to accommodate all field demands
- Offer several density units, %, g/l, ppm, kg/m³, g/cm³
- Maximum 400 days data logging and monitoring
- In-situ measurement and calibration

Conventional ultrasonic attenuation density meter just determines density by varying amplitude of received signals. Unlike this, ENV200 is able to measure changes of concentration in a more sophisticated manner by adopting the patented EEAM (envelope energy averaging method), which measures not only the amplitude of received signals but also observes the shape of signal. It takes all energy as envelope and then convert it into density.

Application

- Water / Wastewater Treatment
- Pulp and Paper
- Food and Beverage
- Power Plant
- Semi-conductor
- Mining

Product

ENV200 is composed of a controller and a pair of sensors, clamp-on or spool-piece sensors, along with optional items stated below

ENV200-C

Basic

Controller(C2S)

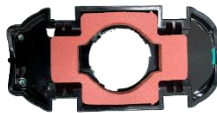


Sensor (S2C)



Optional Items

Ingress Protection Pad(IPP)



Controller Mounting Kit (CMK)



ENV200-S

Basic

Controller (C2S)



Sensor (S2S)



Optional Items

Pipe (IPX)



Controller Mounting Kit (CMK)



Controller

The controller analyzes the transmitted/received ultrasonic signals to calculate the density. The screens of controller consist of numeric, echo profile, data, and information screen.

C2S

Specifications



Unit dimension [mm]

252(W) x 238(H), 125(D)

Weight

2.2 kg (± 0.2)

IP Rating

IP67

Power Supply

100 ~ 240V AC, 50/60Hz, ≤15W
or 24V DC, ≤17W (Option)

Certificate

CE

Mount Dimension [mm]

205(W) x 246(H) – Center Hole (Φ7.9 x 4ea)

Enclosure Material

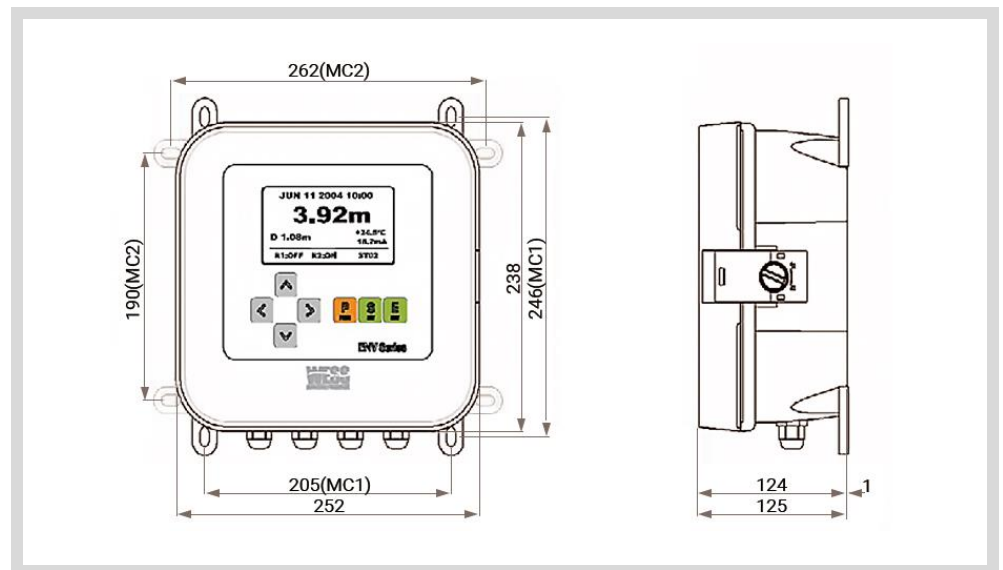
ABS

Operating Temp. [°C]

-20 ~ 70°C (-4~158°F)

Applied Sensor

S2C / S2S-Z / S2S-C



Controller

Function

Sludge Density measurement

Convert attenuated ultrasonic signal to density

Display

Graphic LCD (240x128)

Main Screen

Numeric, Echo profile, Information screen

Current Output

4~20 mA, nom. Load 250Ω (100~750 Ω)

Digital Communication

RS232 (Default) or RS485 (Option)

Data Saving

Maximum 400 days (10K point)

Customer Input

Membrane 7 keys - UP, Down, Left, Right, P (Program), S (Set), E (Exit)

Language

English (Korean, Chinese or Japanese)

Main Screen Information

Density, Time, Current output, Temperature, etc.

Relay

1 SPDT (5A, 250VAC)

Protocol

Standard

Measurement

Measuring Range

0 ~ 500,000mg/l (0 ~ 50%)

1,000 ~ 2,000kg/m³ (1.000 ~ 2.000g/cm³)

Resolution

0.1% or 0.01% (Selectable)

1kg/m³, 0.001 g/cm³

Frequency [kHz]

699 ~ 2,041 (47 steps)

Measuring Unit

% , PPM

kg/m³, g/cm³

Accuracy

±0.15% (±0.5% of F.S.)

±15 kg/m³, ±0.015 g/cm³

Sensors

ENV200 offers two different type of sensors, clamp-on and spool-piece sensors. The clamp-on sensor is non-intrusive device applying any type of liquid and sludge without limitation. The spool-piece sensor has two types, S2S-Z and S2S-C.

S2C

Clamp-On type sensor



Specifications

IP Rating

IP68

Pressure

No limit

Applied controller

C2S

Applied Pipe [DN]

50 ~ 300 (STS & Metal)

50 ~ 600 (PVC & Plastic)

Operating Temp.

-10 ~ 70°C (14~158°F)

Cable Length

10m

Weight

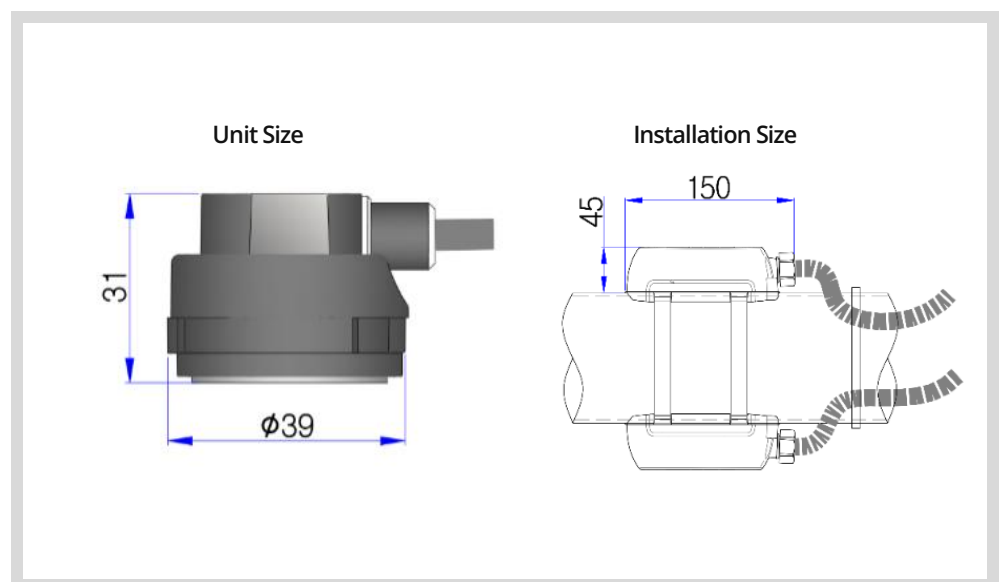
0.8 kg (Include 2 sensors and 10m cable)

Material

Body : Polycarbonate,

Acoustic window : MC Nylon

* The maximum pipe size depends on the sludge type or density.



Sensors

The S2S-Z is standard spool-piece type sensor

S2S-Z

Spool-Piece type Sensor (Standard)



Specifications

IP Rating

IP68

Pressure

Max. 145 psig (10 bar)

Applied Controller

C2S

Applied Pipe [DN]

50 ~ 600

Operating Temp.

-0 ~ 60°C (0~140°F)

Cable Length

10m

Weight

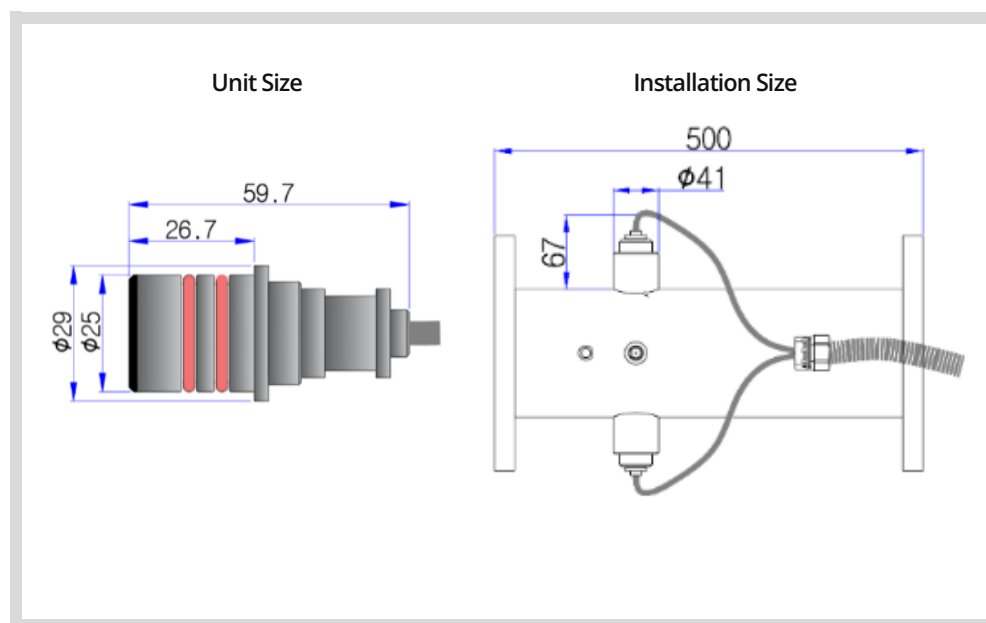
0.95 kg (Include 2 sensors and 10m cable)

Material

Body : STS304

Acoustic window : Epoxy

Seal : Silicone O-Ring



Sensor

The S2S-C is specially designed for corrosive and abrasive applications

S2S-C

Spool-Piece type Sensor (Special)



Specifications

IP Rating

IP68

Pressure

Max. 145 psig (10 bar)

Applied Controller

C2S

Applied Pipe [DN]

50 ~ 600

Operating Temp.

0 ~ 60°C (14~140°F)

Cable Length

10m

Weight

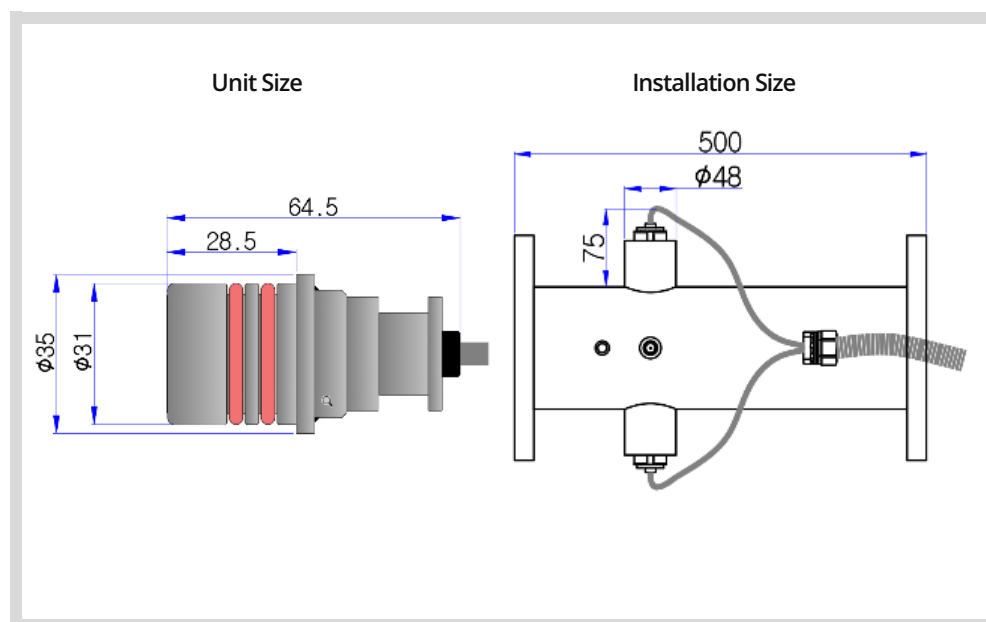
1.10 kg (Include 2 sensors and 10m cable)

Material

Body : STS304

Acoustic window : MC Nylon

Seal : Silicone O-Ring

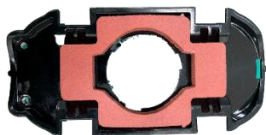


Optional Items

ENV200 offers optional item for water ingress protection as well as couplant lifespan.

IPP

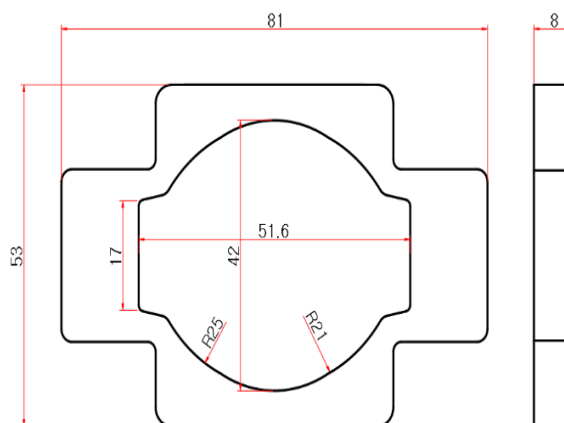
Ingress Protection Pad * Clamp-on Sensor only



Specifications

Dimension [mm]	Applied pipe	Material
81(W) x 53(H) x 8T	100A~600A	Silicon

* For 50A to 85A, please contact your local distributor.



Ordering Code

Controller

Code	Description
C2S	ENV200 single controller, AC100~240V

Sensor

Code	Description
S2C	Clamp-on type sensor
S2S-Z	Spool-piece type sensor (Standard)
S2S-C	Spool-piece type sensor (Special)

Optional Items

Category	Code	Description
Accessory	IPP	Ingress protection pad
Others	DC2	Controller output : DC24V
	RS4	RS485 (STD. RS232)
	MOD	Modbus communication
	C_XX	Total sensor cable length (Unit: m), (STD. 10m) *Clamp-on sensor is not applied